

# Joslyn Art Museum Art Adventures LIVE!

Learn about artworks in Joslyn's collection, and make art of your own.

## ARTIST EXPLORERS

### Description:

Karl Bodmer was equal parts artist and explorer. We will look at some of his drawings and paintings to learn about his early explorations through America's Great Plains and make a sketchbook that can be used to document your experiences and explorations at home.

### Supplies Needed:

- Copy/scratch paper
- One rubber band
- One twig, popsicle stick, or old pencil
- One drawing pencil or crayons



[bit.ly/AAL-bodmer](https://bit.ly/AAL-bodmer)



[pinterest.com/joslyntrc/bodmer-karl](https://pinterest.com/joslyntrc/bodmer-karl)

Karl Bodmer (Swiss, 1908–1893), *A Mouse*, n.d., paper, watercolor and pencil, 8 1/4 x 10 5/8 in. (20.95 x 26.98 cm), Gift of the Enron Art Foundation, 1986.49.366

# Joslyn Art Museum Art Adventures LIVE!

Learn about artworks in Joslyn's collection, and make art of your own.

## COLORFUL CHANDELIERS

### Description:

Create a colorful cut paper chandelier inspired by Dale Chihuly's glass sculptures. We will investigate the colors and shapes found in Joslyn's *Chihuly: Inside & Out* before cutting and assembling construction paper shapes to make chandeliers of our own to hang in our homes.

### Supplies Needed:

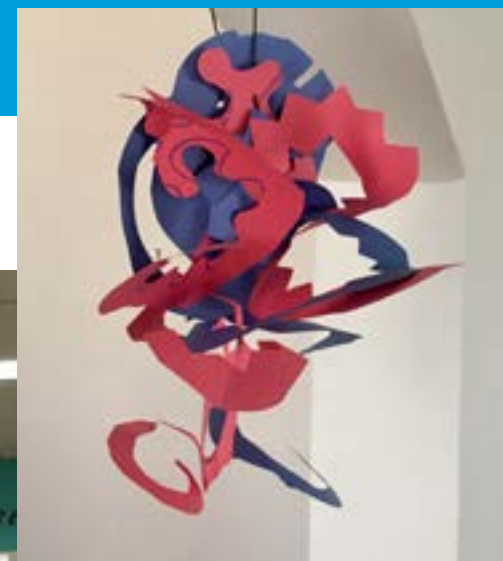
- Two full sheets of different colored construction paper
- Crayons
- Scissors (not necessary)
- String or yarn
- Pencil or holepunch



[bit.ly/AAL-chihuly](http://bit.ly/AAL-chihuly)



[pinterest.com/joslyntnc/chihuly-dale](https://pinterest.com/joslyntnc/chihuly-dale)



Dale Chihuly, (American, b. 1941), "Chihuly: Inside & Out," 2000, steel and blown glass, 29 1/2 x 25 1/2 x 12 1/2 ft., Joslyn Art Museum, Museum purchase with funds from Suzanne and Walter Scott, 2000.1, photo by Joslyn Art Museum

# Joslyn Art Museum Art Adventures LIVE!

Learn about artworks in Joslyn's collection, and make art of your own.

## POP-UP CRITTERS

### Description:

Take a peek at a curious cow in a painting by Alex Katz as we learn about foreground, middle ground, and background. Katz's *Cow* will guide us as we make a pop-up-style assemblage with a curious critter of our own peeking out behind a hill.

### Supplies Needed:

- Construction paper: two full sheets, one half sheet
- Crayons
- Scissors (not necessary)
- Glue stick
- Cardstock or stiff magazine paper or cereal box



[bit.ly/AAL-katz](http://bit.ly/AAL-katz)



[pinterest.com/joslyntrc/katz-alex](https://pinterest.com/joslyntrc/katz-alex)



Alex Katz (American, b. 1927), *Cow*, 1984, oil on Masonite, 18 x 24 in., Gift of American Academy and Institute of Arts and Letters, New York City, Hassam & Speicher Purchas, 1986.28

# Joslyn Art Museum Art Adventures LIVE!

Learn about artworks in Joslyn's collection, and make art of your own.

## 3D DRAWING

### Description:

Create a drawing that loops and swirls right off the wall as we look at a work by Frank Stella that combines painting, drawing, and sculpture. We will draw, cut, and assemble to emulate Stella's racetrack-inspired relief "painting" *Nogaro* while we learn about line, color, and shape.

### Supplies Needed:

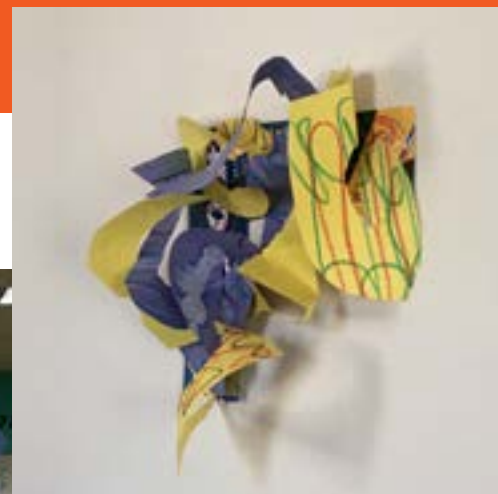
- Construction paper: two half sheets of different colors
- Crayons
- Scissors (not necessary)
- Glue stick
- Cardstock or stiff magazine paper or cereal box



[bit.ly/AAL-stella](http://bit.ly/AAL-stella)



[pinterest.com/joslyntrc/stella-frank](https://pinterest.com/joslyntrc/stella-frank)



Frank Stella (American b. 1936), "Nogaro", 1982, mixed media on aluminum, 115 x 120 x 24 in., Joslyn Art Museum, Omaha, Nebraska, Gift of the Phillip Schrager Collection of Contemporary Art from Terri, Harley and Beth Schrager, 2014.2 © 2018 Frank Stella / Artists Rights Society (ARS), New York



# Joslyn Art Museum Art Adventures LIVE!

Learn about artworks in Joslyn's collection, and make art of your own.

## PICTURE MASH

### Description:

Roger Shimomura is well known for paintings that mashup images from popular culture to tell stories about his life as a Japanese American. We will learn how we can combine pictures to tell stories and mashup images using a homemade transfer paper and pictures we find around the house.

### Supplies Needed:

- Construction paper: one full sheet
- Scratch paper or half a sheet of construction paper
- Crayons (black or another dark color)
- Pencil or pen

**WATCH:**

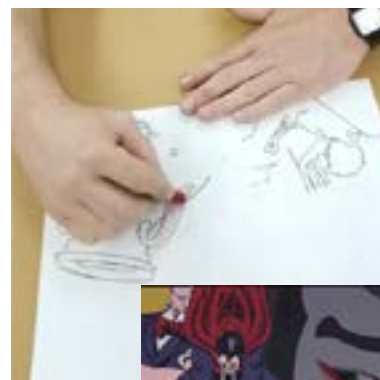


[bit.ly/AAL-shimomura](http://bit.ly/AAL-shimomura)

**EXPLORE:**



[pinterest.com/joslyntnc/shimomura-roger](https://pinterest.com/joslyntnc/shimomura-roger)



Roger Shimomura (American, b. 1939), *Untitled*, 1985, acrylic on canvas, 60 x 72 in., Museum Purchase with funds provided by the friends of Jerome I. Cohn, 1999.35  
© Roger Shimomura

# Joslyn Art Museum Art Adventures LIVE!

Learn about artworks in Joslyn's collection, and make art of your own.

## BALANCE & MOVEMENT

### Description:

George Sugarman's giant yellow sculpture made of cut steel shapes appears to rise like bits of paper blowing in the wind, in Joslyn's Discovery Garden. We will learn to create carefully balanced sculptures of our own using cut and assembled foam shapes.

### Supplies Needed:

- Craft Foam Sheet; one sheet: 9"x12"
- Drawing tool
- Cardstock, cereal box, or cardboard
- Scissors
- Three brass brads

**WATCH:**

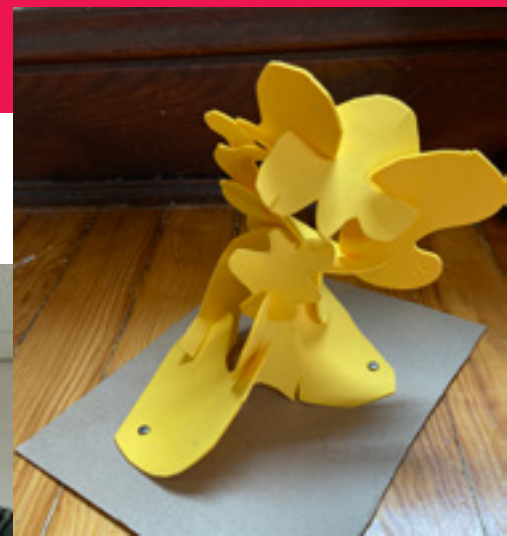


<https://bit.ly/AAL-sugarman>

**EXPLORE:**



[pinterest.com/joslyntnc/sugarman-george](https://pinterest.com/joslyntnc/sugarman-george)



George Sugarman (American, 1912–1999), *Yellow Ascending*, 1977, steel, aluminum, paint, Museum purchase in memory of Leo A. Daly, 1983. Photo courtesy of HDR Architecture, Inc.; © Tom Kessler Photography

# Joslyn Art Museum Art Adventures LIVE!

Learn about artworks in Joslyn's collection, and make art of your own.

## DANCING FIGURES

### Description:

Edgar Degas' famous sculpture "Little Dancer, Aged Fourteen" is our inspiration as we practice drawing loose figures that dance across our paper. Have your members of your household be your models as we capture their graceful poses. We will choose our favorite drawing to transform into a paper sculpture.

### Supplies Needed:

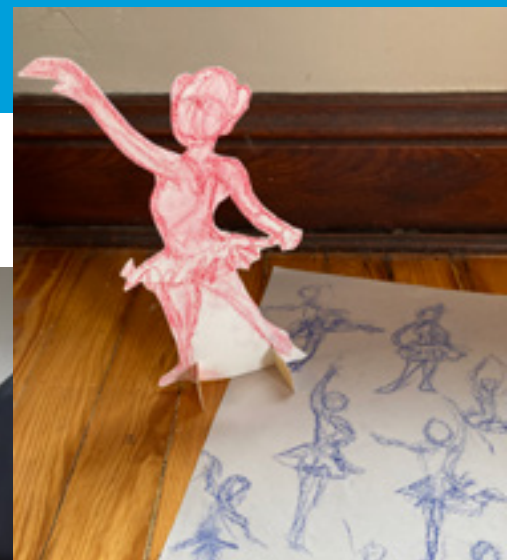
- Grey drawing paper or sketch paper; one sheet: 11"x15"
- Heavy drawing paper; one sheet: 11"x15"
- Chalk pastels or crayons
- Scissors



[bit.ly/AAL-degas](http://bit.ly/AAL-degas)



[pinterest.com/joslyntrc/degas-edgar](https://pinterest.com/joslyntrc/degas-edgar)



Edgar Degas (French, 1834–1917), *Little Dancer, Aged Fourteen*, 1881, cast ca. 1920–21, plaster, height: 39 in. (99.06 cm), Gift of M. Knoedler & Co., Inc., New York, 1971.271.a-b



# Joslyn Art Museum Art Adventures LIVE!

Learn about artworks in Joslyn's collection, and make art of your own.

## PARTS OF ART

### Description:

Fill your mental tool box with the seven elements of art. We will look to some artworks in the collection to see how the masters use shape, line, texture, space, color, form, and value to produce artworks we want to look at again and again, and make masterpieces of our own with those same parts of art.

### Supplies Needed:

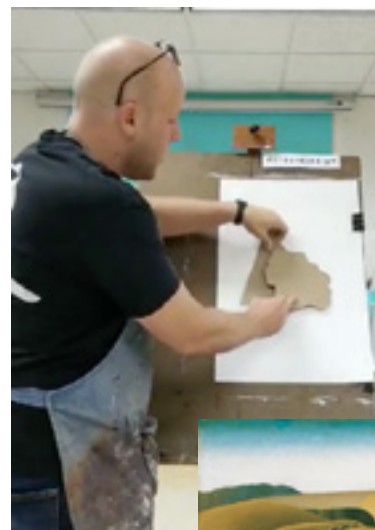
- All media paper
- Black crayon
- Cardstock
- White crayon
- Crayons, pastels, or watercolors



[bit.ly/AAL-wood](http://bit.ly/AAL-wood)



[pinterest.com/joslyntrc/wood-grant](https://pinterest.com/joslyntrc/wood-grant)



Grant Wood (American, 1891–1942), *Stone City, Iowa*, 1930, oil on wood panel, 30 1/4 x 40 in., (76.84 x 101.6 cm), Gift of the Art Institute of Omaha, 1930.35; Art © Estate of Grant Wood/Artists Rights Society (ARS), New York, NY



# Joslyn Art Museum Art Adventures LIVE!

Learn about artworks in Joslyn's collection, and make art of your own.

## WHAT A RELIEF!

### Description:

This time we are inspired by Joslyn's largest work of art...the building itself! When you walk around this pink marble museum, look up to find carved relief panels at the corners of the Memorial Building. We will look to these historical stories to build a relief panel of our own with layers of cut foam shapes.

### Supplies Needed:

- Craft Foam Sheet; one sheet: 9"x5.5"
- Sticker Craft Foam; one sheet: 9"x11"
- Pencil
- Scissors

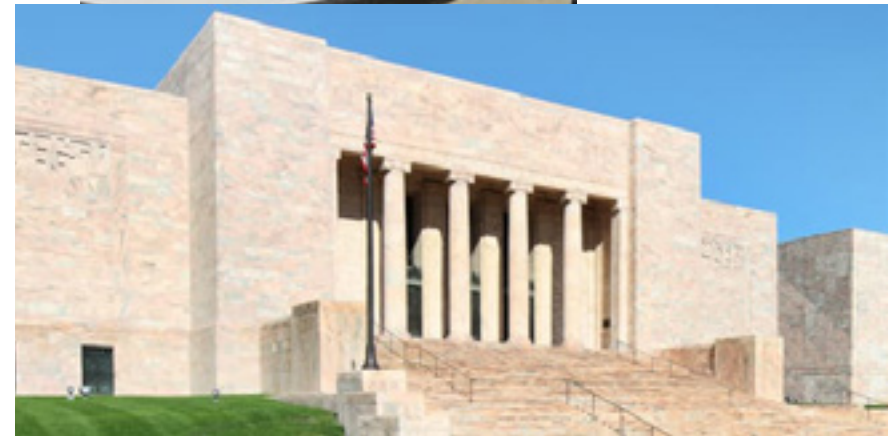


[bit.ly/AAL-architecture](http://bit.ly/AAL-architecture)

EXPLORE:



[pinterest.com/joslyntnc/architecture](https://pinterest.com/joslyntnc/architecture)



*Joslyn Art Museum, Memorial Building, 1928–1931, architects John McDonald (1861–1956) and Alan McDonald (1891–1947); Walter and Suzanne Scott Pavilion, 1993–1994, architect Norman Foster, Baron Foster of Thames Bank (b. 1935)*

# Joslyn Art Museum Art Adventures LIVE!

Learn about artworks in Joslyn's collection, and make art of your own.

## POWER PORTRAITS

### Description:

Take a look in the mirror to create a self-portrait or draw someone special to you as we create drawings using simple facial proportion rules. Then mount them on colorfully patterned backgrounds full of color like Mickalene Thomas' giant painting in Joslyn's galleries.

### Supplies Needed:

- All media paper: 11"x15"
- Patterned paper: various sizes
- Watercolor paint
- Black crayon
- Glue sticks
- Scissors



[bit.ly/AAL-thomas](http://bit.ly/AAL-thomas)



[pinterest.com/joslyntrc/thomas-mickalene](https://pinterest.com/joslyntrc/thomas-mickalene)

Mickalene Thomas (American, born 1971), *Din, une très belle négresse 1*, 2012, rhinestones, acrylic, oil, and enamel on wood panel, 102 x 84 x 2 in. Museum purchase, gift of The Sherwood Foundation, 2019.6, © Mickalene Thomas / Artists Rights Society (ARS), New York

# Joslyn Art Museum Art Adventures LIVE!

Learn about artworks in Joslyn's collection, and make art of your own.

## NIGHT SCAPES

### Description:

Learn basic watercolor techniques to create a night-time sky full of shimmering stars over a dusky landscape like Gustave Doré's *Mountain Landscape* (1877).

### Supplies Needed:

- All media paper: 11"x15"
- Watercolor paint
- Black crayon
- White crayon



[bit.ly/AAL-doré](http://bit.ly/AAL-doré)



[www.pinterest.com/joslyntrc/doré-gustave](http://www.pinterest.com/joslyntrc/doré-gustave)



Gustave Doré (French, 1832–1883), *Mountain Landscape*, 1877, oil on canvas, 30 x 60 1/2 in. (76.2 x 153.67 cm), Gift of Mrs. Lily Javits, 1948.23



# Joslyn Art Museum Art Adventures LIVE!

Learn about artworks in Joslyn's collection, and make art of your own.

## DISAPPEARING SPACE

### Description:

Join us to see how artists in the gallery use the science of perspective to create the illusion of space within a work of art. We will create a painting of a room full of luxury and a sense of space like the somber scene depicted in Jean-Leon Gerome's *The Grief of the Pasha* (1882).

### Supplies Needed:

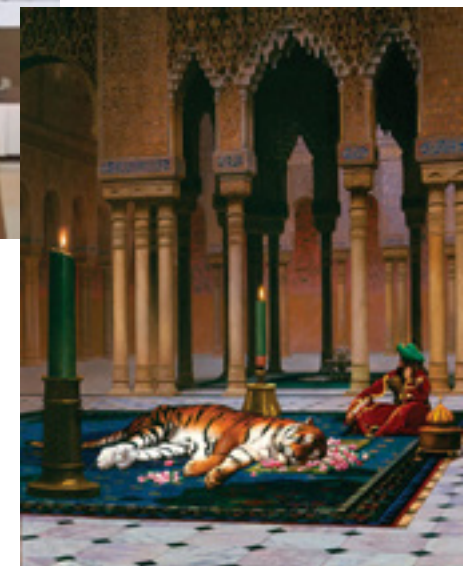
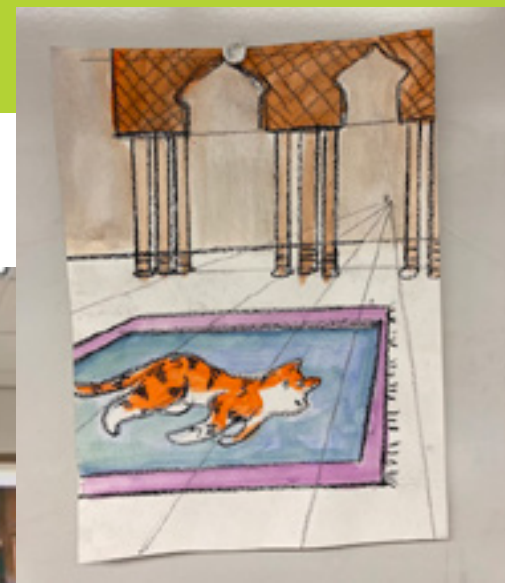
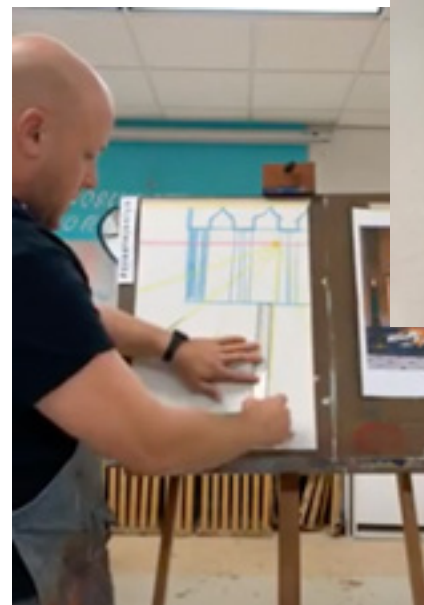
- All media paper: 11"x15"
- Watercolor paint
- Black crayon
- Ruler



[bit.ly/AAL-gerome](http://bit.ly/AAL-gerome)



[pinterest.com/joslyntnc/gérôme-jean-léon](https://pinterest.com/joslyntnc/gérôme-jean-léon)



Jean-Léon Gérôme (French, 1824–1904), *The Grief of the Pasha*, 1882, oil on canvas mounted on masonite, 36 3/8 x 29 in. (92.4 x 73.6 cm), Gift of Francis T. B. Martin, 1990.1

# Joslyn Art Museum

# Art Adventures LIVE!

Learn about artworks in Joslyn's collection, and make art of your own.

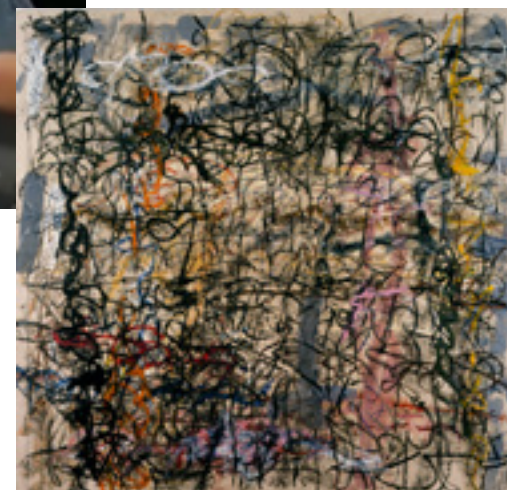
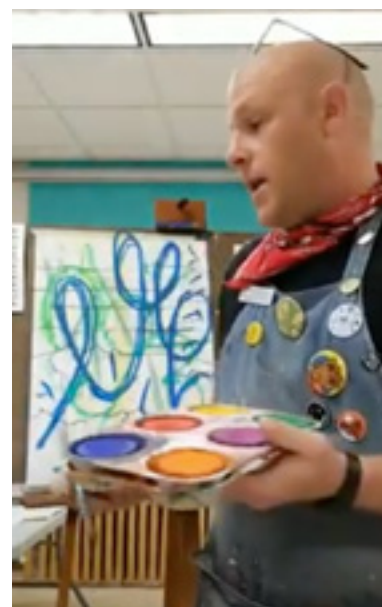
## EXPRESS YOURSELF

### Description:

Tell us how you really feel using brushstrokes and line! Expressionist artists from Joslyn's galleries like Jackson Pollock, Helen Frankenthaler, and Michael Goldberg will show us how to create marks full of energy, nervousness, or relaxation before we experiment with brushstrokes and drawn lines on paintings of our own.

### Supplies Needed:

- All media paper: 11"x15"
- Watercolor paint
- Black crayon
- White crayon



[bit.ly/AAL-goldberg](http://bit.ly/AAL-goldberg)



[pinterest.com/joslyntnc/goldberg-michael](https://pinterest.com/joslyntnc/goldberg-michael)

Michael Goldberg (American, 1924-2007), *To be closely written on a small piece of paper which folded into a tight lozenge might fit any girl's locket*, 1998, oil and oilstick on canvas, 110 3/4 x 115 1/4 in., Museum purchase with funds from Omaha Steaks International, the Phil and Terri Schrager Foundation, 2003.4, © Michael Goldberg

# Joslyn Art Museum Art Adventures LIVE!

Learn about artworks in Joslyn's collection, and make art of your own.

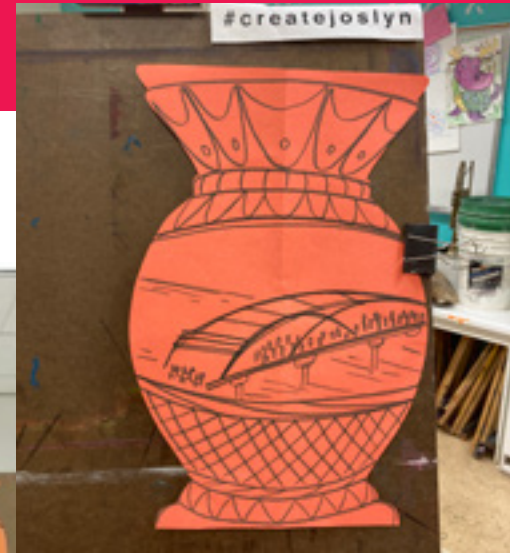
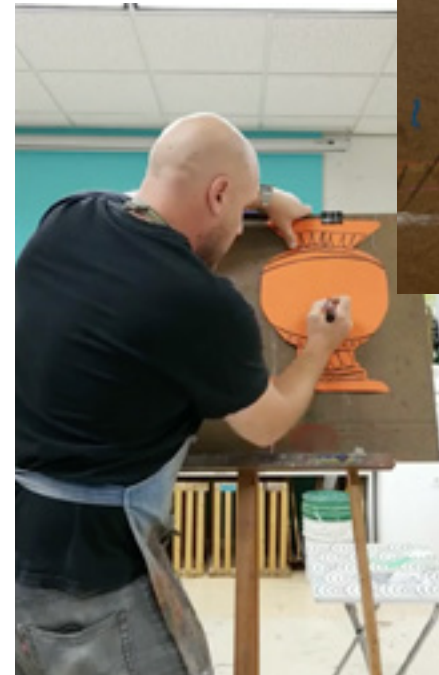
## PAPER POTS

### Description:

Create a two-dimensional paper pot inspired by Joslyn's collection of Ancient Greek ceramics. We will learn how these ancient clay pots were made while we make symmetrical paper pots of our own that tell stories of heroic narratives framed by geometric patterns.

### Supplies Needed:

- Orange construction paper: 12"x18"
- Black crayon
- Scissors



[bit.ly/AAL-ancientgreece](http://bit.ly/AAL-ancientgreece)

EXPLORE:



[pinterest.com/joslyntrc/ancient-greece/](https://pinterest.com/joslyntrc/ancient-greece/)

Attributed to the Omaha Painter (Greek, 6th century B.C.), *Attic Black-Figure Ovoid Neck-Amphora*, c. 570 B.C., terracotta, colored slips, 13 x 10 in., Gift of Mr. & Mrs. Thomas C. Woods, Jr., 1963.48



# Joslyn Art Museum Art Adventures LIVE!

Learn about artworks in Joslyn's collection, and make art of your own.

## HOME IS WHERE THE ART IS

### Description:

Make a masterpiece about where you live. We will create symbols and images that tell people about your home, neighborhood, city, state, or your country. Artists in Joslyn galleries like Grant Wood, Dale Nichols, and Purvis Young will be our guides as we think about what makes where we live so special.

### Supplies Needed:

- All media paper: 11"x15"
- Watercolor paint
- Black crayon

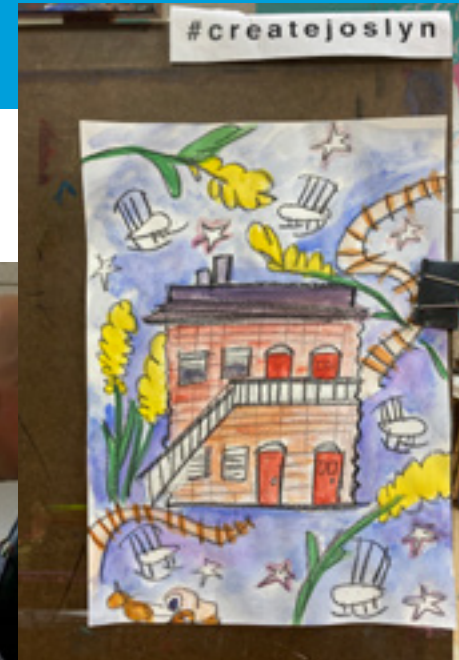
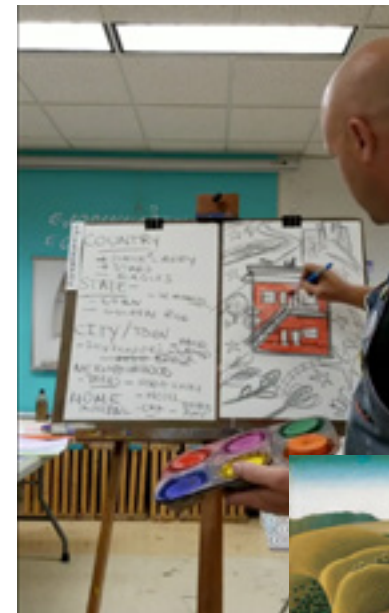


[bit.ly/AAL-regionalism](http://bit.ly/AAL-regionalism)

EXPLORE:



[pinterest.com/joslyntnc/american-regionalism/](https://pinterest.com/joslyntnc/american-regionalism/)



Grant Wood (American, 1891–1942), *Stone City, Iowa*, 1930, oil on wood panel, 30 1/4 x 40 in. (76.84 x 101.6 cm), Gift of the Art Institute of Omaha, 1930.35; Art © Estate of Grant Wood/Artists Rights Society (ARS), New York, NY